



R A B Y

CASTLE



Discover One of England's Finest & Most Impressive Medieval Castles

Visit the Castle, 18th century Walled
Gardens, 200 acre Deer Park, Stables Café,
Shop & Woodland Play Area

www.raby.co.uk

R A B Y

CASTLE OPENING TIMES

Castle: open 11am to 4:30pm

March - June – open Wednesday to Sunday.

July & August – open Tuesday to Sunday.

September & October – open Wednesday to Sunday.

Open Bank Holidays between March and October.

Last admission 4pm.

Please ask for times of Daily Tours.

Walled Gardens: open from 10am, 7 days a week from
beginning of March to the end of October.

Park: open 7 days a week from 10am.

Stables Café, Shop and Woodland Play Area:
open 7 days a week from 10am. FREE admission.

There is plenty of car parking at Raby Castle.

ADMISSION

Admission Charges	Castle, Park & Gardens	Park & Gardens	Annual Pass
Adult (16+ yrs)	£13.00	£8.00	£22.00
Concession: (Senior/Student)	£12.00	£7.00	£20.00
Children (5-15 yrs)	£6.50	£4.00	£10.00
Under 5's	Free	Free	-
Family (2+3)	£26.50	£22.00	£60.00

Prices and opening times are subject to change.

GROUP BOOKINGS

Raby Castle and High Force welcome pre-booked group
tours and school/educational visits throughout the year.
Corporate bookings are also welcome and there are a
range of spaces/rooms available. Please visit the website
for more details of our group rates or call us to tailor a
package to your requirements.

DOGS

Raby is fully dog friendly; dogs on leads are welcome year
round at High Force and in the 200 acres of Park and
Walled Gardens at Raby Castle. Dogs are also welcome in
the Stables Café and High Force Hotel. Due to the historic
nature of the site, only assistance dogs are allowed inside
the Castle.



R A B Y

HIGH FORCE



One of the Most Spectacular Waterfalls in England

Situated in the North Pennines
Area of Outstanding Natural Beauty

www.raby.co.uk

R A B Y

HIGH FORCE OPENING TIMES

The Waterfall is open daily* from 9am until dusk.

The Hotel is open daily until late.

**Please be advised that it may be necessary to restrict access
to the Waterfall in adverse weather conditions, please check
the website for more details.*

ACCESS

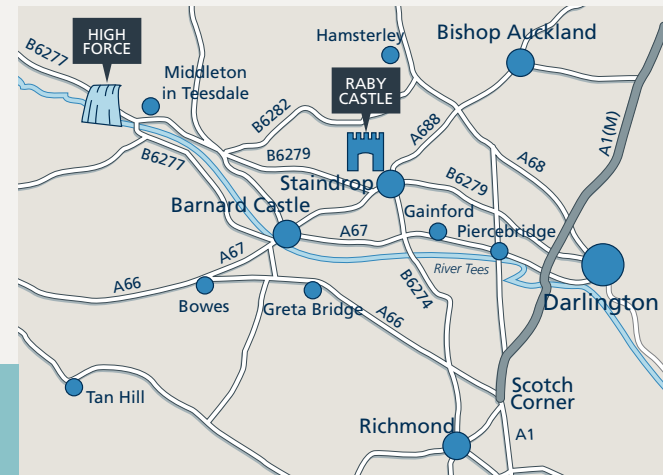
A full access statement is available on the website.

LOCATION

Raby Castle is situated on the A688 West Auckland to
Barnard Castle road, 8 miles North East of Barnard Castle.
It can be easily reached from the A1(M) and A66.

High Force is situated along the B6277, 4 miles from
Middleton-in-Teesdale.

Both attractions are well signposted with brown tourist signs.



CONTACT

Raby Castle, Staindrop,
County Durham DL2 3AH
Telephone: 01833 660202, Email: admin@raby.co.uk
www.raby.co.uk/raby-castle

High Force Hotel and Waterfall, Forest-in-Teesdale,
County Durham DL12 0XH
Telephone: 01833 622336, Email: highforcehotel@raby.co.uk
www.raby.co.uk/high-force



This leaflet is printed onto paper from a sustainable source.

RABY CASTLE

Raby is without a doubt one of the most impressive intact castles in England. Situated in the foothills of the Durham Dales, it was built in the 14th Century by the powerful Nevill family.



Explore the picturesque Gardens and Parkland featuring stunning heritage landscapes, Red deer and Fallow deer. A visit is incomplete without a tour inside Raby Castle itself which houses a fabulous art collection and sumptuous interiors. The Castle was the home of Cicely Nevill, Rose of Raby, mother of Kings Edward IV and Richard III. It was also the scene where the 'Rising of the North' plot took place and served as a Parliamentary stronghold during the civil war. Since 1626 Raby Castle has been the seat of Lord and Lady Barnard and the Vane family.

COACH HOUSE

The Coach House contains a collection of 18th and 19th century coaches and carriages. This includes 18th century travelling chariots, bearing the arms of the Earl of Darlington; the Raby State Coach, built in the early 19th century for the Duke of Cleveland, and hand-operated, horse-drawn fire engines.

The Tack Room has a marvellous display of harnesses and other trappings, including an exotic Arabian saddlecloth, harness and livery worn by the coachmen of Raby in the Edwardian era.





RABY WALLED GARDENS

The 18th century Walled Gardens encompass five acres to explore and are still graced with many of the original design features, including two magnificent yew hedges, a scenic pond in the Central Garden, large herbaceous borders and fruit trees, including a fig tree in its own glass house, which was brought to Raby in 1786.



© Visit County Durham

RABY DEER PARK

200 acres of fine Parkland surround Raby Castle, providing plenty of space for children to play or to get away from it all. Watch the herds of Red and Fallow deer and their young from afar, stroll around the two large ponds and spot other wildlife.



© Visit County Durham

RABY ACTIVITIES

The Park and Gardens provide an excellent opportunity for fresh air, fun and exercise. The Woodland Play Area will keep children entertained and bikes are available for the family to hire so that you can explore the wider Park. Walking and cycling routes can be obtained from the admissions team when purchasing your ticket.

The tranquil setting of Raby Castle is perfect for a leisurely stroll or to simply find some peace and quiet in our fast-paced world.

There are a wide variety of organised activities taking place throughout the year including Forest School, trails for children of all ages, guided dog walks, workshops and outdoor theatre. Please check the Raby/event pages for details.

© Peter Atkinson Photography



THE STABLES CAFÉ & SHOP

Join us for lunch in the Stables Café, a stylish place to enjoy coffee, cake and afternoon tea with friends and family. Many of the stalls still bear the name plaques of the horses that were once housed there, offering historic characteristics alongside modern décor. The menu is regularly updated to make the most of the wide-range of local seasonal produce available.

The large covered outdoor seating area is perfect all year round and is fully licensed along with the Café, allowing you to enjoy a glass of wine whilst watching the bustle of activity within the Coach Yard.

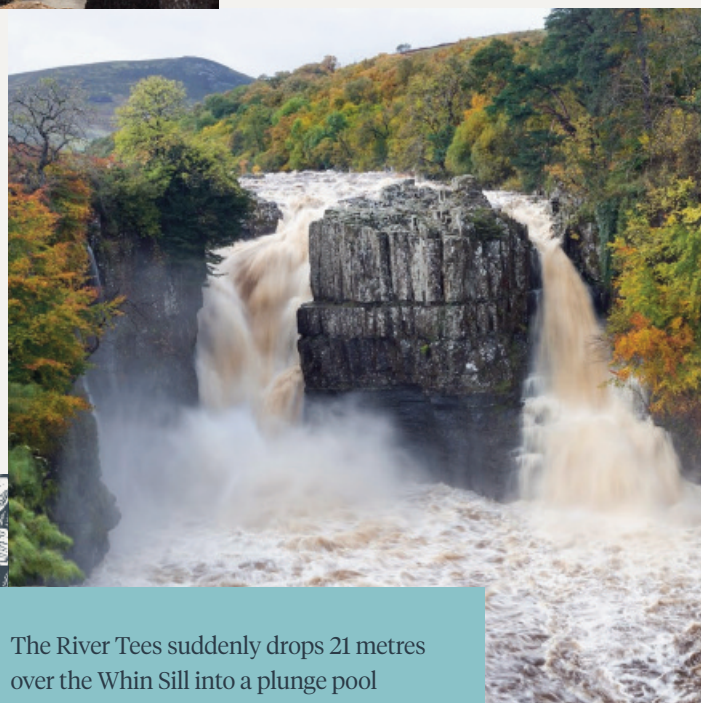


Adjoining the Café, our Gift Shop offers unique hand-picked gifts, homewares, confectionary, food and pocket money items to suit all budgets. Retail ranges change on a regular basis, including plants during the warmer months and a magical Christmas shop from November.



HIGH FORCE

High Force is one of the most impressive Waterfalls in England. The River Tees has been plunging into this gorge for thousands of years but the rocks and history it reveals are far more ancient – with origins dating back over 300 million years.



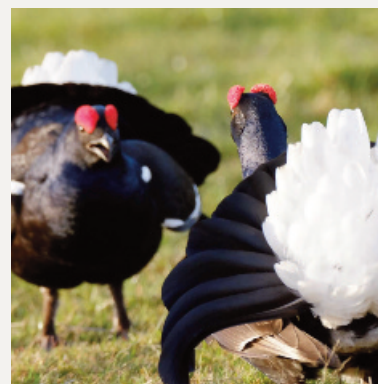
The River Tees suddenly drops 21 metres over the Whin Sill into a plunge pool below. A gentle and pretty Woodland Walk leads you to a viewing area at the base of the Waterfall. High Force is an ideal place to stop for a picnic, or a starting base for exploring Teesdale and the North Pennines by car, bike or on foot.

NATURAL BEAUTY & WILDLIFE

High Force is surrounded by the stunning countryside of Upper Teesdale situated in the North Pennines Area of Outstanding Natural Beauty, it was the first area in England to achieve European and Global Geopark status. The aim is to protect the area's unique geodiversity, which includes the Whin Sill that can be seen at High Force.

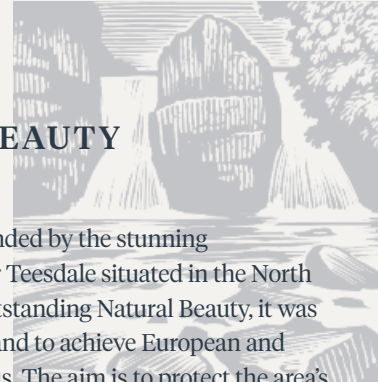
High Force has an abundance of animal and plant wildlife throughout the seasons, from the vast array of wildflowers, ferns and towering trees, to Roe deer and otters. Close by is the National Nature Reserve, which is famous for the rare spring gentian flower, England's largest juniper wood and home to the rare Black grouse.

Raby plays an important role in the stewardship and conservation of this magnificent place.



OUTDOOR ACTIVITIES

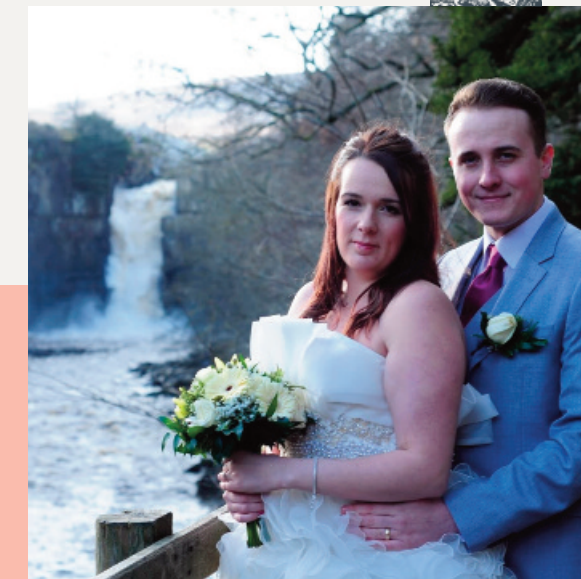
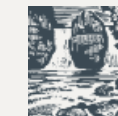
Fishing permits for a section of the River Tees are available to purchase from the High Force Hotel. Canoe launch permits are also available.



HIGH FORCE HOTEL

A traditional country inn set in the picturesque countryside of Upper Teesdale, the dog friendly High Force Hotel is the perfect base for exploring the many things to see and do in the area. Delicious, home-cooked food is served all day, from breakfast, snacks, ice creams and lunches right through to evening meals in the relaxed setting of the High Force Hotel.

The stylish en-suite bedrooms combine country charm with fresh, modern facilities. Our passionate team offer the best of guest service and are committed to making your stay at the High Force Hotel the perfect place for a relaxed stay, whether visiting for pleasure or on business.



HIGH FORCE WEDDINGS & MEETINGS

Book your wedding at one of the North of England's greatest natural sights. High Force Hotel and Waterfall is a unique setting for your special day surrounded by some of the most stunning scenery in the country.

Due to the rural setting, the Hotel is popular for hosting team building events, allowing colleagues to explore the great outdoors. The Hotel has a large function room which is perfect for private dining, meetings, training sessions and to celebrate any special occasions. Our team can also arrange a variety of outdoor activities such as archery, clay pigeon shooting, climbing and kayaking.