



RABY

Spring 2024

Farming | Forestry | Land Management | Buildings | Development | Leisure & Tourism



RABY

The
Rising

Spotlight

'The Rising' at Raby Castle

Opening this spring, Raby Castle brings an exciting new visitor experience to the home of Lord and Lady Barnard in captivating County Durham. Known as "The Rising", it will be the largest development in generations at this 14th century family home and the next chapter in the fascinating history of Raby Castle.

Historic and iconic buildings previously hidden from view have been renovated and repurposed to create an elegant retail space, a stylish restaurant and magnificent event and exhibition spaces, all intertwined with beautifully landscaped walkways to create the perfect day out.

The historic 18th century Walled Garden has been remodelled by world renowned designer Luciano Giubbilei alongside Lady Barnard. They have created a stunning five-acre scheme which celebrates the Walled Garden's existing features, including the famous sculptural yew hedges.

The Rising combines Raby's rich history as the home of one of Britain's most notorious plots, the Rising of the North, with the promise of growth, energy and ambition, and will provide visitors with a unique experience set within the scenic landscape of Raby Castle's parkland. All aspects of the scheme bear the distinctive Raby trademark of simple, honest design combined with the Estate's energy and spirit.

"For several years we have been working to restore the historic working buildings at Raby Castle, where our family have been living for the past 400 years," said Lord and Lady Barnard.

"It is an ambitious project that we are hugely excited about launching to visitors who already know and love Raby, alongside new visitors to the area. We genuinely feel Raby now has something for everyone – from its unique history and collections in the Castle, to the stunning parkland, Plotters' Forest woodland adventure playground, and full events programme – we hope our visitors will enjoy everything it has to offer."





The historic listed buildings known as The Dutch Barn and The Riding School were originally working buildings servicing the castle, but had fallen out of use over a century ago. Over the past two years they have been lovingly restored using traditional skills and materials sourced from the Estate.

The magnificent Grade II* listed Coach House and Stables, designed by renowned architect John Carr in the 18th century, will now offer a free-to-enter exhibition which allows visitors to delve deeper into Raby's rich history and the picturesque Teesdale landscape.

Visitors will receive a warm welcome at The Round House, a newly constructed building that will be a ticketing and information hub. The building takes inspiration from a simple but beautiful field barn situated close to the castle. Its surroundings are tied together by landscaping designed by award-winning North Yorkshire based Alistair Baldwin.



The Walled Garden comprises the East, Formal and West Gardens. A highlight feature is the new grass amphitheatre set in the lower part of the East Garden, which will host a programme of outdoor productions. Raby has created a beautiful place for the local community and visitors to enjoy all year round.

A newly designed glasshouse, The Vinery, modelled on the original which stood in the same spot, will seat over 200 people. The Vinery will offer locally sourced ingredients from across the Estate and a menu for all, enjoyed with panoramic views across the High Vinery Garden and Raby Castle beyond.

Raby Castle is bringing a destination with a difference to the North of England, where visitors of every generation can discover County Durham's thrilling past and promising future.

RABY

Buildings

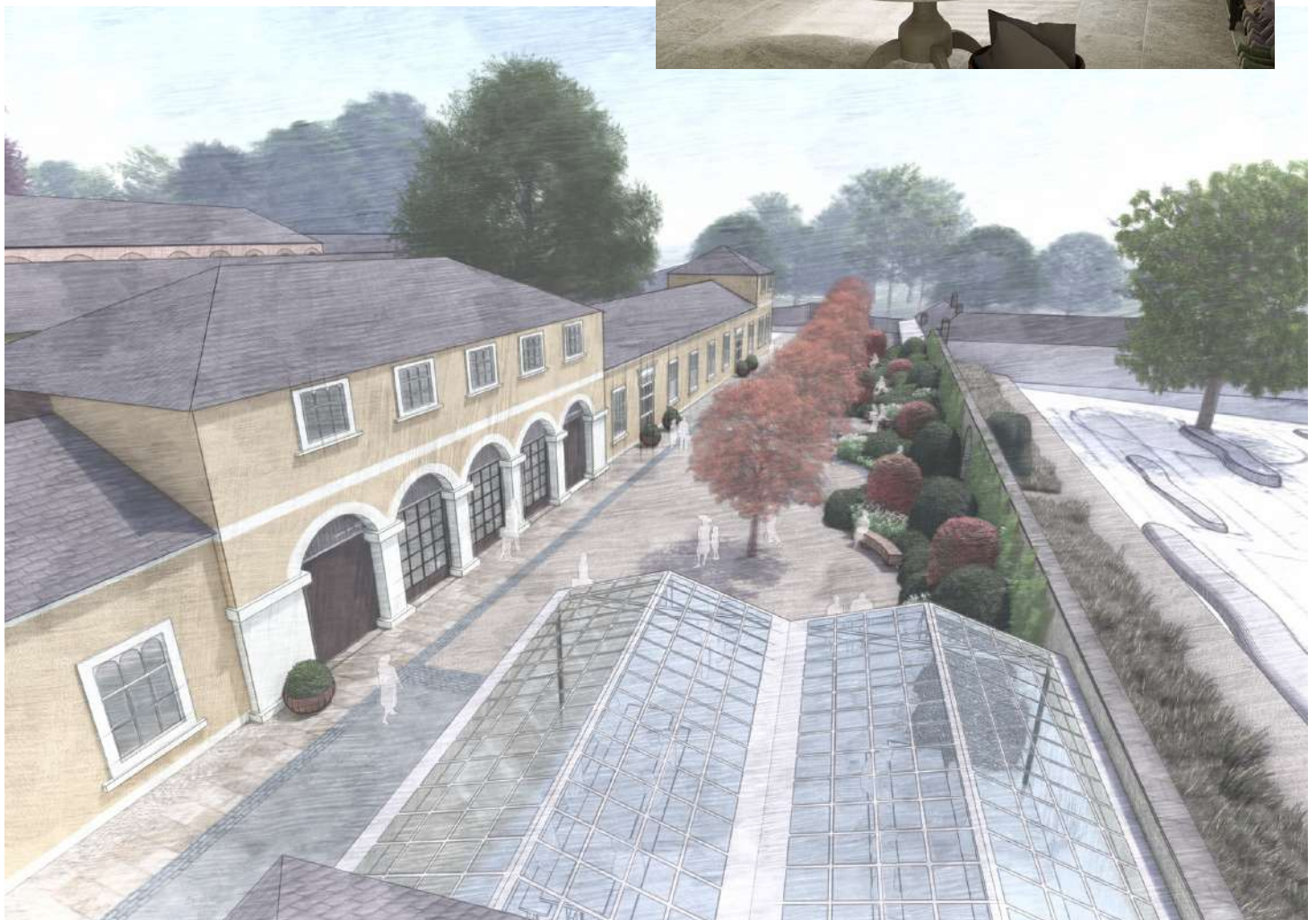


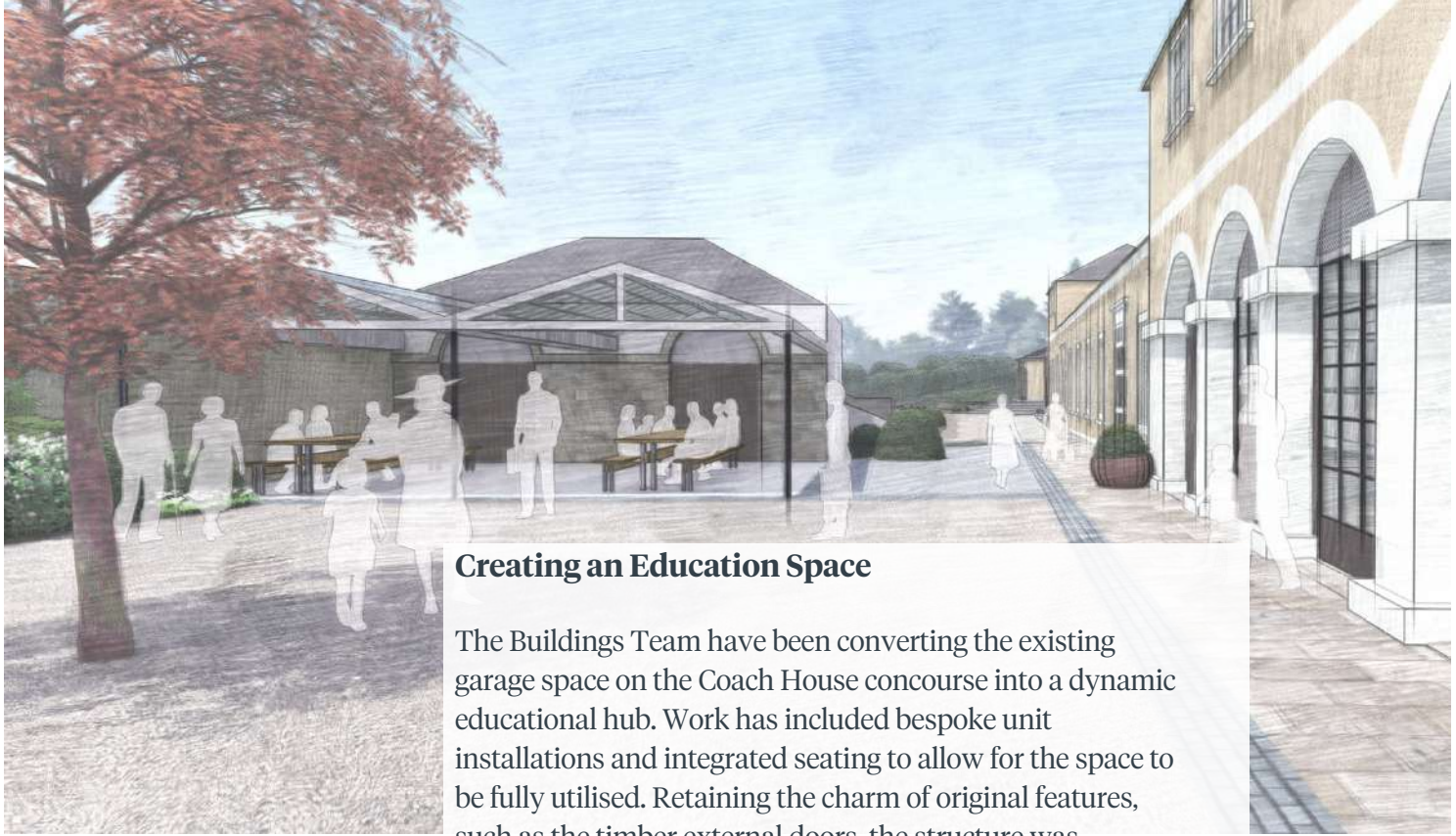
Spotlight

Celebrating an Equine Past as Work Commences on 18th Century Coach House and Stables

A collaborative approach is being taken between the Buildings and Rising construction teams as restoration work gets underway on the 18th century Coach House and Stables, a key part of 'The Rising' development.

The prominent Grade II* listed Coach House and Stables reflect the Vane family's long-standing passion for horses. The buildings were designed by renowned architect John Carr in the late 1700s to house the family's collection of heritage carriages as well as its horses. As part of the restoration, the buildings' original features, including cast iron Victorian stable partitions, have been refurbished and repurposed to create a unique heritage space which will be used as beautiful retail and exhibition areas.





Creating an Education Space

The Buildings Team have been converting the existing garage space on the Coach House concourse into a dynamic educational hub. Work has included bespoke unit installations and integrated seating to allow for the space to be fully utilised. Retaining the charm of original features, such as the timber external doors, the structure was seamlessly integrated into its architectural surroundings. Furthermore, modern amenities, including heating systems and cleaning facilities, were seamlessly incorporated to enhance functionality and comfort within the space.

Changing Places Facility

The Rising development will include a new state-of-the-art Changing Places Facility, meticulously crafted to meet compliance standards. Working closely with Durham County Council and INNOVA Care Concept, an existing building will be transformed into a beacon of accessibility. Drawing upon the expertise of DCC and Innova, the facility will set a new standard, instilling a sense of pride within the Estate. With the completion of works, the facility will soon be registered on the national database.



Ash Hill

Returning to the Estate in November 2022, Ash Hill underwent a transformational journey, requiring substantial investment to ensure full compliance with regulatory standards before relaunching the property. Nestled between Bowlees and High Force, Ash Hill offers breath taking views south eastward across the Upper Teesdale Estate. The Buildings Team have worked closely with Lord and Lady Barnard to curate the layout and internal design to align with the current Raby portfolio. The existing footprint of the building was used to create a modern and practical layout. Extensive renovations were undertaken to achieve an impressive EPC rating of C-72- this was achieved using modern insulation techniques as well as a carefully considered heating system. The team have worked tirelessly on the project and are now reaping the rewards as the property is nearing completion.

R A B Y



Curation and Archives

Curation & Archives

Showcasing Raby Estate's rich past, the Coach House and Stables will house a free-to-enter exhibition, giving visitors a taste of what is to come when venturing into the historic castle, surrounding parklands and wider areas of the Estate.

The centrepiece of this exhibition will be an audio-visual projection onto a bespoke carved oak eight-metre table, sourced sustainably from the Estate and crafted by local artisan furniture maker Anthony Nixon of Barnard Castle. The projection will showcase the unique Teesdale landscape, part of the wider Estate, and highlight iconic landmarks such as High Force Waterfall, as well as the sights and sounds of the local area and wildlife

In the neighbouring Tack Room, extensive refurbishments are underway, restoring and conserving items from Raby's proud equine history, including saddles, bridles, carriage sets and a traditional travelling chest which belonged to Henry Vane, 2nd Duke of Cleveland when he served in the 75th Regiment of Foot. Each restored piece will be displayed in its historic setting.

The Drying Room, traditionally used for storage, will include an additional audio-visual display presented by Lord Barnard, in which he will provide insight into the work of the wider Estate.



The Housekeeper's Sitting Room

Raby Castle opened its gates this season with an exciting new addition to its popular tour. The Housekeeper's Sitting Room has been given a new lease of life, and now provides a fascinating summary of the history of the castle through a new introductory video and a family tree mural by Lucy Roscoe.

Raby Castle has also made efforts to increase accessibility for 2024. For visitors who struggle to access areas due to stairs, a new touch screen in the Entrance Hall will allow users to digitally explore the rooms and find out more about their development and use.

These exciting new additions are arriving during a momentous year for Raby Castle.





The Round House, the only entirely new-build in The Rising, will act as a hub for visitors with a central information desk.

Around the walls, more work by Lucy Roscoe will feature in a series of light-hearted murals reflecting the different experiences visitors can enjoy around the site. These murals include the characters 'Parker and Millard', the inspiration for which has been taken from Raby's Butler and Housekeeper, Thomas Parker and Annie Millard, at the turn of the 20th century, and the historic Visitor Books in the castle's collection.

The Riding School will become home to three of Raby's carriages, the impressive State Coach and two Travelling Chariots. These have been conservation cleaned and will be available to view in the entrance lobby when the Riding School is open to visitors. Two further Raby vehicles, a caned whiskey and an estate cart will be in the Coach House lobby area, and another will be in the castle Entrance Hall.

R A B Y

Forestry

Estate Oak

The Rising scheme is an Estate wide initiative with support from all departments, including the forestry team. Making the most of resources from previous storms, Estate oak has been repurposed throughout the development.

To the rear of the Vinery, Estate timber has also been used to provide larch cladding. The local nature of this material significantly reduces our carbon footprint and supports sustainable forestry practices.

Ben, our Forestry and Estate Maintenance Supervisor, has been milling benches that will be used throughout the Dutch Barn and Vinery landscaping scheme by Landscape Architect and Garden Designer, Alistair Baldwin. Alongside this, the Estate oak has also been used to craft a remarkable 6-meter table for visitors to enjoy local produce whilst dining outdoors at The Vinery.



The beautiful trees across Raby Parkland have been undergoing essential maintenance to increase the longevity of the historical landscapes.

The Forestry team have removed dead wood and reduced crown weight to prevent future damage, preserving our landscape for generations to come. Additionally, twenty-five new oak trees have been planted across the Deer Park, further enhancing our iconic landscapes.

The Dryton Oak situated on the Shropshire Estate is a fantastic example of a veteran tree. To continue its heritage Tim Hess, the Estate Maintenance and Landscape Lead, has collected acorns from its base and potted them up ready to grow on. Once we have the young saplings, we will plant them out across the Estate in chosen locations.

Across the Estate, restoration and repairs continue, employing traditional skills and rural crafts to repair stone walls like the one bordering Bath Wood, which had been damaged in a previous storm. These efforts preserve our heritage while ensuring a sustainable future for Raby Estate.



RABY

Sustainability



Spotlight

Sustainability Strategy

After a three month review of operations, a Sustainability Strategy was agreed for the whole Estate in December.

The strategy, which will underpin our future business planning, focuses on three themes: minimising our impacts, enhancing biodiversity, and investing in local communities around the Estate. Thirteen commitments have been made, from reducing our carbon footprint to supporting lifelong learning and active leisure.

In order to deliver against these commitments, the New Year has seen a twin focus on the castle and farm operations. At Raby Castle, we have been compiling information in support of an application for the Green Tourism Award.

The award requires evidence of everything from energy use, including the investments in renewable energy at The Rising scheme such as the borehole and geothermal energy network, to the fine detail of how we minimise packaging and the environmental credentials of the cleaning and conservation chemicals we use.

All this information should provide a good baseline for monitoring change and helps us to understand how we can improve our performance in future years.



Sustainability Manager, Victoria



Farm Manager, Philip

On the farms in both County Durham and Shropshire, the focus has been understanding the best ways to measure and monitor soil health. Previous soil studies have mainly looked at the important nutrients required for farming, such as phosphates and potassium. Now, we are looking to expand the analysis to other indicators, such as earthworm counts and soil structure, in representative fields. We have also started to look at ways to reduce our carbon footprint, for example, by reducing our energy bills through smart control systems or exploring the potential of solar energy to support the more intensive operations on the farm.

With all the work done by Philip and his team to introduce regenerative agricultural methods over the last few years, it will be exciting to see if early changes in key indicators of soil health, such as soil organic matter, can be detected and what more we may do to accelerate change.

With change in mind, we will be looking to expand on the existing Green Teams at Raby Castle and High Force Hotel to involve all Estate departments later in 2024. We are also keen to involve volunteers and members in sustainability initiatives such as monitoring wildlife and citizen science.

RABY



Farming



Soil to Oil

In the rolling hills of County Durham, nestled within the picturesque landscape of Raby Estates, lies a piece of agricultural heritage that spans over two centuries. Raby Home Farm, established by the Earl of Darlington with a vision to foster agricultural innovation, has stood the test of time, blending traditional farming practices with modern sustainability techniques. Today, the same family tends to the land, preserving the essence of the countryside while embracing responsible land management.

Our Raby Rapeseed Oil has been sourced from the rich soil on Raby Home Farm. Spanning over 5 acres, the rapeseed used in this oil embodies the essence of the region.



What makes Raby Rapeseed Oil truly special is not just its origin, but the meticulous process it undergoes. Every drop of oil is cold-pressed by Lovesome Oil, a local family based company located in Darlington. This method, which is conducted at room temperature, ensures that the oil retains its natural colour and flavour without compromise. The seed waste from the oil extraction process is repurposed as nutrient-rich animal feed which is then used across the Estate.



What sets Raby Rapeseed Oil apart isn't just its taste, but its health benefits too! With less saturated fat and higher omega-3 levels than olive oil, it's a heart-healthy choice for conscious consumers. It also boasts a high smoke point of 230 degrees celsius, making it ideal for a variety of cooking applications, whether used to roast vegetables, bake delectable cakes and pastries, fry crispy delights, or simply drizzle over salads for a burst of flavour.

For those eager to experience the essence of Raby in their own kitchen, Raby Rapeseed Oil is available for purchase at The Stables Shop at Raby Castle. Priced at £12.00 for a 500ml bottle.

Updates from Shropshire Farming

Spring in Shropshire, much like the rest of the country, seems to be taking its time to fully arrive, with a lingering wintry chill still in the air. However, signs of its imminent arrival are heartening, especially when greeted by the melodies of birdsong at dawn and dusk.

Despite the persistent winter ambience, the promise of spring is evident in the gradual growth of crops, particularly in the flourishing oilseed rape fields which thrive as daylight hours increase and soil temperatures slowly rise.

Unfortunately, adverse weather conditions, including excessive rain and flooding, have led to the loss of some winter crops. Yet, those that remain are showing promising progress. Early established crops, such as post-beans and potatoes, are getting on particularly well, with those recovering from slug damage now making strides to catch up. However, there are areas, especially where seed beds were subpar, experiencing issues with low seed counts per square meter.

To support their growth, all crop received their initial fertilisation of a Nitrogen-Sulphur blend. To minimise any disruption, special care has been taken during spreading, with the tractor kept as light as possible and a chaser driver delivering the fertiliser directly. This approach has helped contain any mess, which is crucial in the face of persistently wet conditions.

Reflecting on past years, it is astonishing to note that by February 20th 2023 all spring drilling had been completed and fields rolled. In contrast, this year's progress has been slower, with only three fields of spring beans established on selective light soil fields by March 9th 2024 and unfortunately this was swiftly followed by a deluge of 14mm of rain the next day!

As we look ahead, we remain hopeful for a change in weather patterns, eagerly anticipating the opportunity to complete the remaining spring drilling and ensure a fruitful season.



A landscape photograph showing rolling green hills under a cloudy sky. In the foreground, a road curves through a field. A large, cleared area of brown earth, likely a construction site, is visible in the middle ground. The hills in the background are covered in vibrant green grass, with some darker patches of vegetation. A few small buildings are scattered across the landscape.

RABY

*Land
Management*

Biodiversity Net Gain

We are thrilled to share the latest updates on our commitment to biodiversity at Raby Estate.

As part of enabling development planning consent connected to the Rising development, we have undertaken significant initiatives to enhance our natural environment. These include the establishment of hedge rows, creation of ponds, growth of diverse grassland habitats, and extensive tree and scrub planting. Moreover, we have dedicated areas to wildflowers and bare soil, fostering a rich variety of habitats across five distinct sites local to Gainford, Staindrop, and the Castle.

This work was undertaken by our skilled Estates team in collaboration with external contractors and we are delighted to report that these newly created habitats are flourishing, providing invaluable sanctuaries for local wildlife.



Soil Conservation and Restoration

In our ongoing efforts to preserve and restore our Estate, the topsoil excavated from the Rising development has been strategically repurposed across the wider Estate in Upper Teesdale.

This has helped to reduce diffuse metal mine pollution in the uplands watercourse and the wider river network. Collaborating closely with various partners such as Yorkshire Dale River Trust, neighbouring landowner Mark Hutchinson, the Coal Authority, and National Landscapes, the project aims to utilise revegetated mine spoil to filter pollutants at their source, thereby preventing wider dispersal.

Looking ahead, we are excited to embark on the next phase of our soil conservation efforts. Works above the road on Raby land will involve:

- Removing stockpiled soil for dispersion on mine waste below the road.
- Spreading the remaining soil to a depth of 20-30cm above the road surface.
- Employing hydroseeding techniques and a carefully curated seed mix, similar to that used at Middle End Farm.
- Erecting protective fencing, including rabbit fencing, and installing dropboxes to safeguard treated areas.

R A B Y

Shropshire



Raby Shropshire contributes Heritage Items for The Rising Development

This old stone trough from Uppington House will soon be making its way up to Raby Castle to take pride of place within The Rising, alongside a desk from Raby Shropshire's old Estate Office, a lead cistern and an array of staddle stones. These remarkable pieces will stand as proud symbols of heritage and tradition in the development.

Green Social Prescribing

In January, the Community Connectors meeting convened at Uppington Cricket Club. This was the first meeting to showcase Raby Shropshire as an asset for Green Social Prescribing activities, particularly centred around the Wrekin. The meeting was attended by representatives from 23 local charities, community groups, and Green Social Prescribing (GSP) link workers, and the gathering aimed to explore fresh opportunities within the region. Discussions revolved around leveraging Raby's resources to offer diverse venues for Green Social Prescribing initiatives, fostering both mental and physical well-being among participants. While Raby's journey in Green Social Prescribing is just unfolding, our vast expanse of natural spaces presents countless prospects to enrich lives and nurture connections with the great outdoors.



Shropshire named in the ABTA World's Top 10 'Destinations to Watch' in 2024

It is truly exciting news that Shropshire has secured a spot among the world's top 10 'destinations to watch' in 2024 by ABTA, highlighting its breath-taking landscapes, charming towns, and idyllic villages. Nestled near the tranquil waters of the River Severn and surrounded by historic towns and picturesque countryside, Raby Shropshire epitomizes the essence of this remarkable county. Described by ABTA as a 'rural gem,' Shropshire is rapidly gaining popularity among tourists seeking authentic experiences.

Nestled within the heart of the Estate lies the Summerhouse, offering a one-of-a-kind accommodation amidst the stunning Shropshire countryside. The magnificent octagonal Elizabethan Tower stands proudly, commanding views of the Shropshire Hills and creating an enchanting retreat.

Wild Raby Venison

Our sustainably sourced wild Raby Venison has grown in popularity, with numerous repeat customers returning for this flavourful, lean meat. Renowned for its high protein content and abundance of B vitamins and iron, wild Raby Venison stands as a healthy dietary option. Raby Venison is available from the Estate Office.



Trash Free Trails

On Sunday, March 3rd, Raby Shropshire came together to support RECCE & The Trash Free Trails Litter Pick, held at The Wrekin, The Ercall, and Limekiln Woods.

Participants, including riders, runners, and walkers, were all welcome to take part in this two-hour event to rid the environment of litter. The sheer volume of single-use plastic collected during the event was astounding. Telford & Wrekin Council took charge of recycling efforts and proper disposal of non-recyclable waste. This marks our second consecutive year of collaboration, and we are enthusiastic about expanding our volunteer base to encompass a broader area next year. Being part of this purpose-driven adventure was immensely rewarding, and we eagerly anticipate contributing again in the future.



R A B Y

HR and Finance
at Raby Estate



Modernising Infrastructure and Employee Experience

The Estate has made significant investments in both its public facing and behind the scenes infrastructure to accommodate the expansion in employee and visitor numbers. Here are some key developments:

IT Infrastructure Upgrades: Our focus has been on upgrading IT equipment and improving connectivity. This includes installing new fibre internet connections to Estate offices in Durham and Shropshire, as well as ensuring reliable internet access for visitors to the new buildings in The Rising development.

Modernisation of Financial Systems: The Finance team have implemented new software to modernise financial systems. This includes supplier invoice scanning software, to streamline payment processes for local suppliers and partially automate invoice processing. Additionally, two new systems are set to go live in April, providing real time financial reports and a digital rota management system for teams at Raby Castle and Home Farm.

Intranet Launch: A new intranet site has been launched to serve as a central hub for employees. It provides access to news, events happening around the Estate, and a range of systems and information.

HR Benefits Partnership: The HR team has partnered with Vivup, a benefits provider, to offer an expanded range of benefits to Raby employees. These benefits can be easily accessed online, with new benefits being added regularly such as discounted gym memberships.

Overall, these investments demonstrate a commitment to modernising infrastructure and enhancing employee experience across departments within the Estate.

Recruitment Drive ahead of The Rising Launch

The Rising at Raby Castle has already created 30 jobs, and we aim to deliver many more for the region when it opens this spring. The scheme, which is part of the ambition of Lord and Lady Barnard to make Raby Castle more accessible to the community and benefit the local economy, is now advertising for key positions in the hospitality, retail, tourism and gardening departments.

A key area of the restoration project is the recreation of a historic glass house into a beautiful dining destination. The Vinery will provide many unique career opportunities, including a Sous Chef and a Baker.

There has been a significant investment in a new kitchen facility at the stylish eatery, which will enable Raby to produce home baked artisan breads and a range of pastries, alongside menus celebrating Estate produce and the use of seasonal flavours from the gardens. A key benefit for these hospitality roles will be the predominantly daytime hours; a fantastic perk for work life balance.

The stunning remodelled five-acre garden, reimagined by world renowned designer Luciano Giubbilei alongside Lady Barnard, will also see new roles. Stewart has recently been welcomed into the Garden team, and Raby are looking for one more Estate Gardener to support with the maintenance of this iconic horticultural creation.

Claire Jones, Head of Leisure and Tourism at Raby Castle, said “The momentum is building now as we near the final stages of this ground-breaking development, which will enhance our visitor attraction for generations to come and create a leading tourist destination in the north of England.”

“We are looking for truly remarkable individuals to join our existing team of talented staff, who share a passion and enthusiasm for this wonderful place.”

Other roles include the appointment of an expanded retail team to oversee the new shop in the Coach House, selling a selection of homeware and gifts displayed on reclaimed furniture from across the Estate.





The Leisure and Tourism team are currently hiring a new Marketing and Events Executive to assist with digital marketing and to drive business, as well as planning and executing spectacular events in our fantastic locations. We are also looking for a dynamic, hardworking and experienced Housekeeper to maintain high levels of cleanliness within the newly developed visitor facilities.

As well as providing a unique opportunity to work in extraordinary locations across this beautiful country Estate, these roles offer a fast paced and varied position for someone bursting with energy, who is passionate about providing exemplary service.

Raby has continued the tradition of supporting younger generations by providing apprenticeships, placements and training programmes, and where possible has hired North East based contractors and suppliers. We would like to welcome Rosanna as she starts her role as Apprentice Business Administrator. Additionally, we're thrilled to have Tommy and William on board as Apprentice Joiners, eager to contribute their talents to our ongoing projects

Raby Estates also offers the opportunity to work across the wider estate in extraordinary locations, with job roles in departments ranging from farming, land management, forestry, property maintenance and restoration. The Estate are currently recruiting for a Seasonal Harvest Worker to lead on corn, rolling and secondary cultivations, as well as non-tractor related tasks working on a variety of crops.

As we welcome these fresh faces, we also bid farewell to some of our valued colleagues who have contributed greatly during their time with us. We say goodbye to Dennis Flanagan, who leaves the Estate with nearly 13 years of service as a Tradesman, and Elisabeth Forster who left the Estate after 5 years as Administrator Assistant. Hannah Morton, Jamie Warner, and Susan Rigg, have each left their unique mark in construction administration, joinery supervision and senior guiding, and will be greatly missed. We express our gratitude to our departing colleagues and wish them every success in their future endeavours.

For full details about the new vacancies at Raby Castle, head to: www.raby.co.uk/careers

R A B Y

What's
coming up

It's time to open the doors on a packed Spring and Summer programme across the Raby Estate.

Leisure & Tourism

Upcoming Events



Easter Fun Children's Trails

The Plotters' Forest, Deer Park & High Force Waterfall
29th March - 14th April



Black Grouse Lek Stay

High Force Hotel
Thursday 18th & Monday 22nd April



Women of Raby Tour

Raby Castle
27th April & 4th May



Hot Cross Bun Masterclass

Raby Castle
Friday 5th and Sunday 7th April



Stargazing Suppers

High Force
Saturday 13th April



Rural Retreat

Raby Castle
Sunday 21st April

Leisure & Tourism

Upcoming Events



The Great British Dog Walk
Raby Castle
Sunday 5th May



Spring Seasonal Market
Raby Castle
Saturday 27th - Sunday 28th April



Spring Floral Workshop
Raby Castle
Saturday 18th May



Morning Meditation and Sound Bath
Raby Castle
Saturday 25th May



Landscape Painting Workshop
Raby Castle
Saturday 1st June



Open Farm Sunday
Raby Castle
Sunday 9th June

Leisure & Tourism

Upcoming Events



Adventure Cinema

Raby Castle

Friday 12th - Sunday 14th July



Classic Car Show

Raby Castle

Saturday 30th June



Auto Italia

Raby Castle

Sunday 21st July



Children's Interactive Theatre: Pirates!

Raby Castle

Saturday 3rd August



Summer Fun Children's Trails

The Plotters' Forest, Deer Park & High Force Waterfall
Throughout July and August



Harvest Seasonal Market

Raby Castle

Saturday 24th - Monday 26th August



Enquires

Durham Office
01833 660888
reception@raby.co.uk
Raby Estates, Office Square, Staindrop
Darlington, County Durham, DL2 3NF

Shropshire Office
01952 740223
shropshire@raby.co.uk
Raby Estates Office, Uppington,
Telford, Shropshire, TF6 5HN

